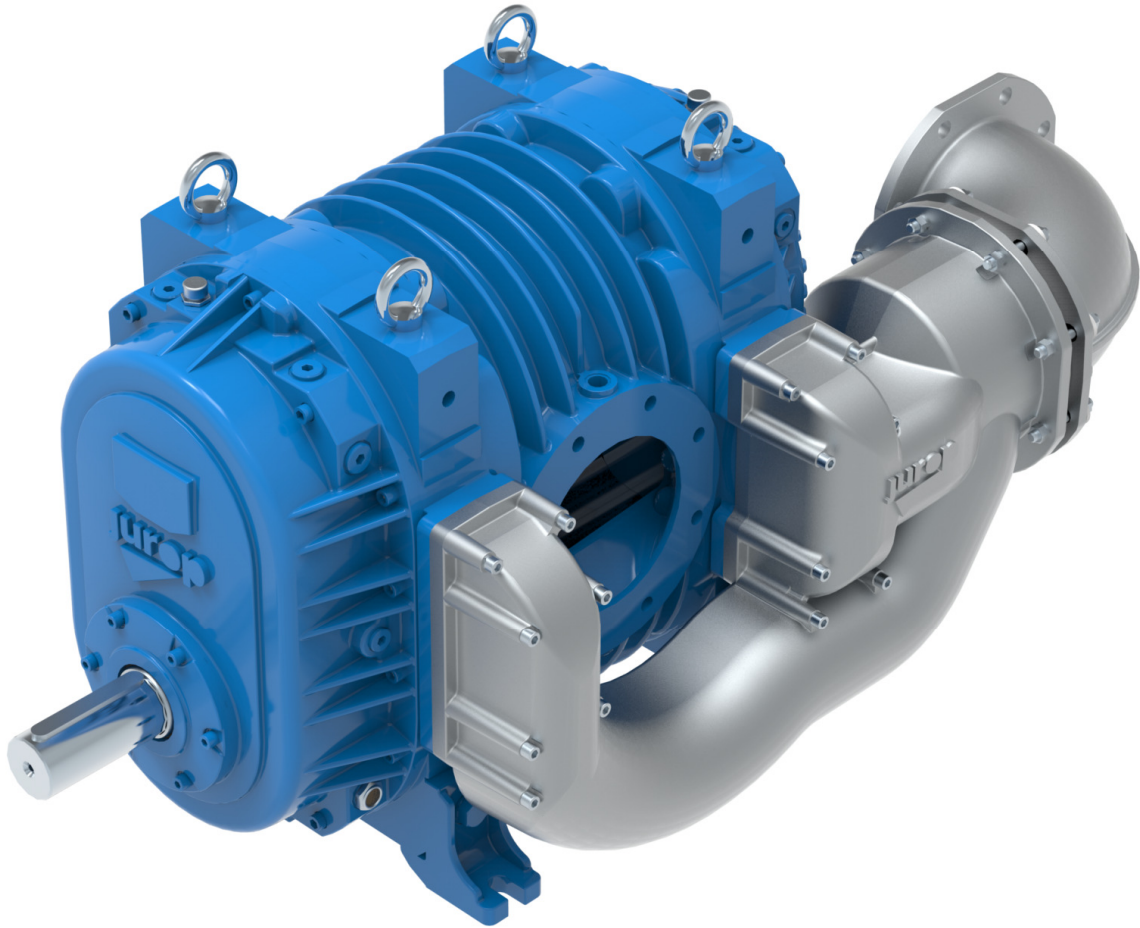
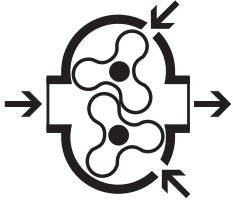


IT

EN

PVT 200-280-400-700-1000



POMPE / PUMPS

Pompa a lobi per alto vuoto

*Injection cooled high  
vacuum lobe pump*

**Jurop**

COMPANY WITH  
QUALITY SYSTEM  
CERTIFIED BY DNV GL  
= ISO 9001 =

**CARATTERISTICHE - CHARACTERISTICS**

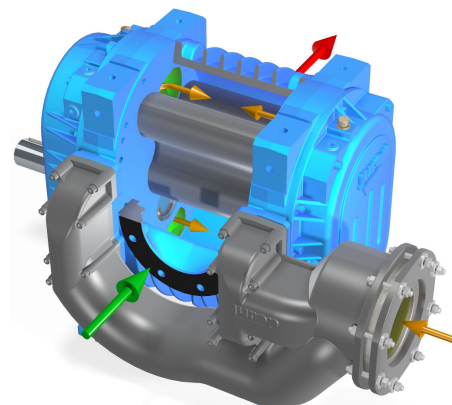
Pompa per vuoto volumetrica con rotori trilobati e sistema di raffreddamento ad iniezione laterale.  
*Positive displacement vacuum pump with tri-lobe rotors and lateral injection cooling system.*

Alto vuoto, livello di rumore ridotto, efficiente raffreddamento di tutti gli organi in movimento.  
*High vacuum, low noise level, efficient cooling of all the moving parts.*

A richiesta: trasmissione predisposta per motore idraulico.  
*Upon request: drive elements for hydraulic motor.*

Guarnizioni di lunga durata per alte temperature.  
*Long life high temperature seals.*

Funzionamento senza olio e senza usura.  
*Operating without oil and without wear.*


**PRESTAZIONI - PERFORMANCES**

Modello Model	Velocità [min <sup>-1</sup> ] Speed [rpm]	Vuoto - Vacuum [%]								Pressione - Pressure [bar abs]				
		0 %		30 %		60 %		Max	1.5 bar		2.0 bar			
		Q m <sup>3</sup> /h	N kW	Q m <sup>3</sup> /h	N kW	Q m <sup>3</sup> /h	N kW		%	Q m <sup>3</sup> /h	N kW	Q m <sup>3</sup> /h	N kW	
<b>PVT200</b>	4200 (1400)	1280	5	1220	15	980	25	93	0	35	1120	25	1040	43
	4000 (1333)*	1235	4.5	1180	14	925	24	92	0	33	1065	24	990	40
	3800 (1266)	1185	4	1140	13	870	23	91	0	32	1010	22	940	38
	3400 (1133)	1090	3	1010	11	710	20	90	0	28	900	19	800	33
	3000 (1000)	1000	2	930	9	630	17	88	0	24	780	16	670	29
<b>PVT280</b>	3400	1850	8	1690	23	1490	38	93	0	56	1640	35	1490	59
	2900*	1560	5	1443	18	1250	32	91	0	46	1410	28	1280	52
	2500	1300	4	1220	15	1032	27	89	0	39	1190	23	1070	43
	2100	1150	3	981	13	801	23	87	0	31	1000	18	875	36
<b>PVT400</b>	3400	2600	9	2320	29	2060	52	93	0	74	2290	46	2090	82
	2900*	2160	6	2000	24	1730	43	91	0	62	1950	38	1770	71
	2500	1800	4	1690	20	1430	36	89	0	53	1650	31	1480	58
	2100	1590	3	1360	16	1110	30	87	0	42	1390	24	1210	48
<b>PVT700</b>	2500	4150	22	3800	52	3000	82	93	0	112	4000	80	3750	138
	2400*	3980	21	3580	49	2850	78	92	0	107	3830	76	3600	131
	2200	3650	19	3150	43	2550	70	91	0	98	3500	69	3300	118
	1900	3200	12	2800	32	2150	57	90	0	80	3000	55	2700	98
	1600	2700	7	2250	27	1650	47	89	0	66	2500	41	2150	81
<b>PVT1000</b>	2500	6400	42	5900	83	4900	127	93	0	175	5720	115	5350	188
	2400*	6100	37	5650	80	4700	124	92	0	171	5520	110	5250	180
	2200	5750	22	5150	68	4200	112	91	0	165	4920	101	4500	165
	1900	4800	19	4350	56	3600	94	90	0	134	4200	83	3870	142
	1600	4000	12	3600	43	2800	78	89	0	111	3570	68	3300	120

**CONDIZIONI DI RIFERIMENTO – REFERENCE CONDITIONS**

Gas convogliato: aria - *Conveyed gas: air*

Pressione assoluta di riferimento - *Absolute reference pressure: 1013mbar (14.7psi)*

Temperatura di riferimento - *Ambient reference temperature: 20°C (68°F)*

Funzionamento in vuoto: scarico atmosferico - *Vacuum condition: atmospheric discharge*

Funzionamento in pressione: aspirazione atmosferica - *Pressure condition: atmospheric suction*

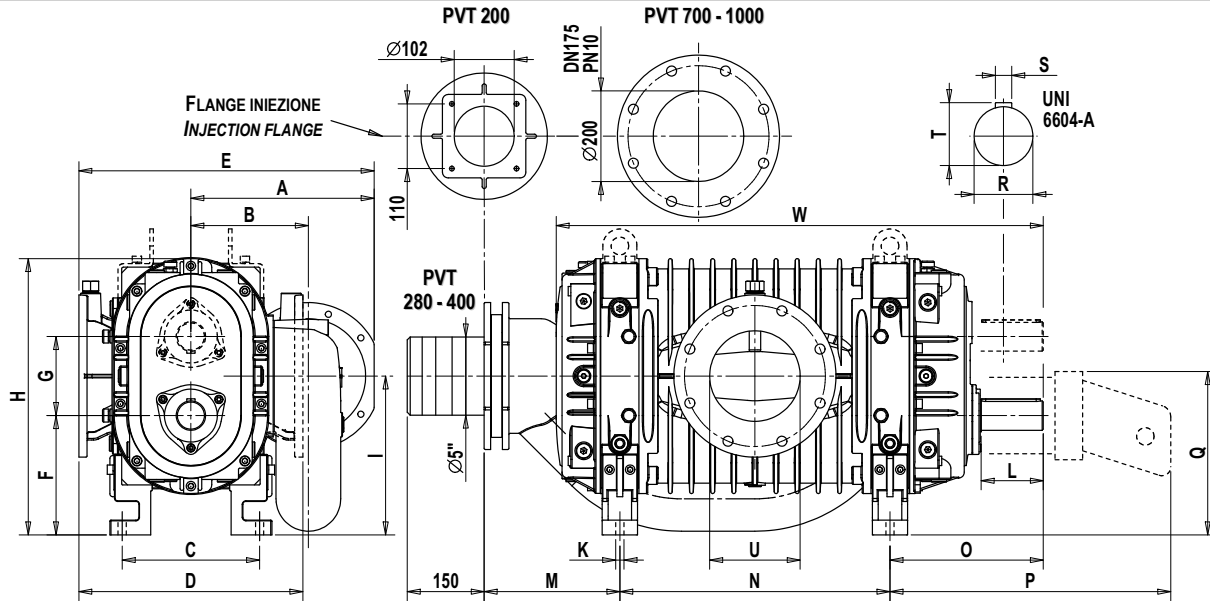
( ) Con moltiplicatore di giri - *With multiplier* | \* Velocità consigliata - *Suggested speed*

I dati riportati in tabella si riferiscono al decompressore privo del gruppo di aspirazione, e sono soggetti ad una tolleranza pari a +/- 5%. - Actual performance may vary of 5% and are referred to the vacuum pump without suction group.

**PRESSIONE SONORA - SOUND PRESSURE**

	PVT 200	PVT 280	PVT400	PVT700	PVT1000
Pressione sonora della sola pompa (senza trasmissione, gr. aspirazione, silenziatori a vuoto max, rpm max a 7m in campo libero). - <i>Sound pressure of the pump only (without drive transmission, suction group, mufflers at max vacuum rate, max rpm at 7m in free field).</i>	72 dB(A)	72 dB(A)	73 dB(A)	78 dB(A)	80 dB(A)
Pressione sonora media di fronte alla pompa su veicolo con presa di forza su trasmissione a 7m in campo libero. Rilievo in analogia alla norma ISO EN 3744. - <i>Average sound pressure in front of the pump on a vehicle equipped with P.T.O. on cardan shaft. (at 7m in free field). Measures according to ISO EN 3744.</i>	78 dB(A)	78 dB(A)	79 dB(A)	79 dB(A)	81 dB(A)

**DIMENSIONI E CONFIGURAZIONI - DIMENSIONS AND ARRANGEMENT**

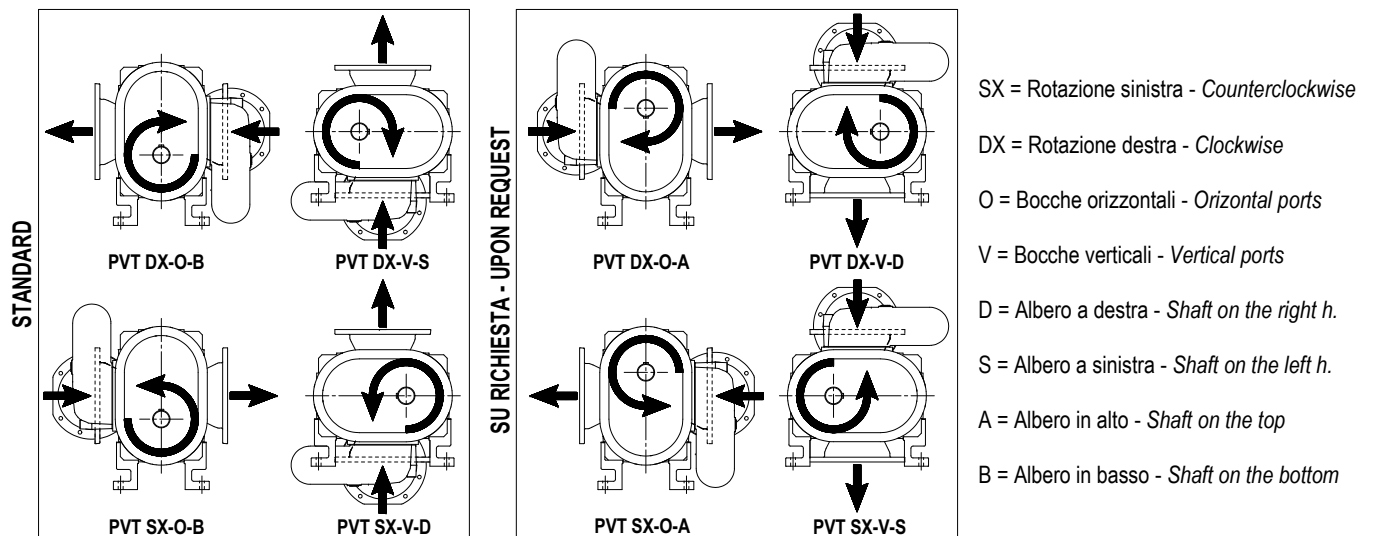


	A	B	C	D	E	F	G	H	I	K	L	M	N
PVT200	276	168	176	270	458	155	104	373	207	M14	69	266	328
PVT200M**	276	168	176	270	482	119	104	373	207	M14	74	266	328
PVT280	312	200	200	312	468	167	135	436	234	M14	86	316	350
PVT400	312	200	236	392	508	203	135	470	270	M14	106	231	460
PVT700	386	239	532	438	623	234	210	658	339	M20	150	344	422
PVT1000	386	239	532	462	623	234	210	658	339	M20	150	344	630

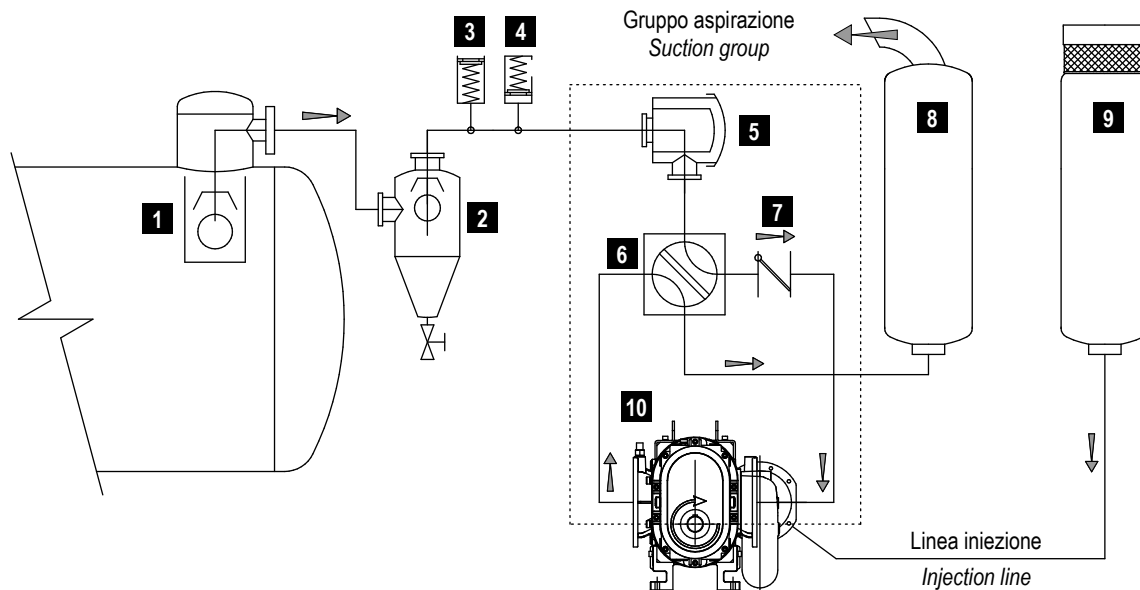
  

	O	P*	Q*	R	S	T	U	W	Peso - Weight
PVT200	154	428	215	38 g6 -0.009 -0.025	10	41	110	616	160 kg
PVT200M**	269	-	-	45 g6 -0.009 -0.025	14	48.5	110	746	210 kg
PVT280	241	531	280	50 g6 -0.009 -0.025	14	53.5	122	699	192 kg
PVT400	261	536	310,5	50 g6 -0.009 -0.025	14	53.5	155	829	240 kg
PVT700	385	828	364	70 g6 -0.010 -0.029	20	74.5	200	955	640 kg
PVT1000	385	828	364	70 g6 -0.010 -0.029	20	74.5	220	1163	780 kg

\* Trasmissione idraulica - Hydraulic drive | \*\* Con moltiplicatore di giri - With multiplier



**Nota - Note:** PVT200 M (con moltiplicatore di giri avente rapporto 3:1) è disponibile solamente nelle configurazioni: PVT DX-O-B e PVT SX-O-B - PVT200M (with gearbox 3:1) is available only in the following arrangements: PVT DX-O-B and PVT SX-O-B.

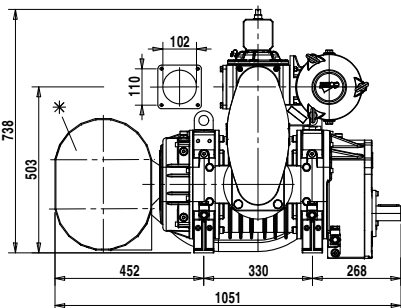
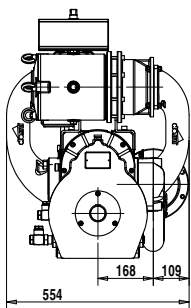
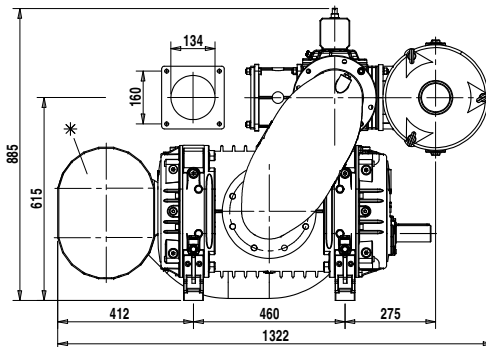
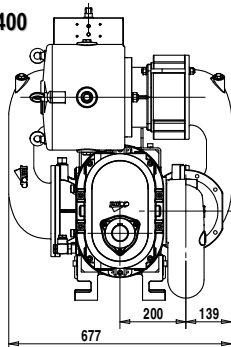
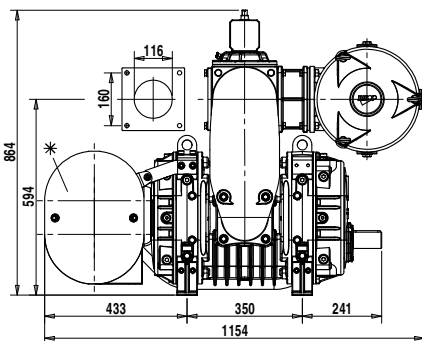
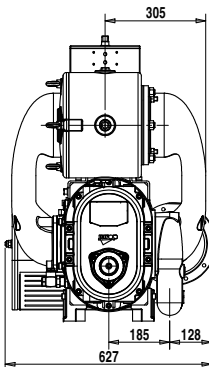
**INSTALLAZIONE ED ACCESSORI - INSTALLATION AND ACCESSORIES**

**COMPONENTI LINEA VUOTO - VACUUM LINE COMPONENTS**

1	Valvola troppo pieno – Primary shutoff	6	Valvola 4 vie – 4 way valve
2	Depuratore – Secondary shutoff	7	Valvola di non ritorno – Non return valve
3	Valvola rompivuoto – Vacuum relief valve	8	Silenziatore scarico – Exhaust muffler
4	Valvola massima pressione – Overpressure valve	9	Silenziatore iniezione standard – Standard Injection muffler
5	Filtro aspirazione (Standard o ADR/ATEX) – Suction filter (Standard or ADR/ATEX)	10	Termostato di sicurezza (di serie) – Safety thermostat (standard)

**GRUPPI ACCESSORI - GROUPS OF ACCESSORIES**

- Gruppo aspirazione pneumatico – Pneumatic suction group.
- Sensori di livello olio – Safety oil level switches.
- Silenziatore iniezione compatto (\*) – Compact injection muffler (\*)

(\*) : in alternativa al silenziatore di iniezione standard.  
 (\*) : as an alternative to the standard injection muffler.

**PVT200**

**PVT400**

**PVT280**

**PVT700**
