

ItemNo	PartNo	Description	Revision	Material	Process	Def ault /QT Y.
1	MH-000-01-01	Chassis Assembly	0	See Sub Dwg	Assembly	1
2	MH-100	Subframe Assembly	1	See Sub Dwg	Assembly	1
3	MH-200	Total Tank Assembly	1	See Sub Dwg	Assembly	1
4	MH-300	Room	1	See Sub Dwg	Assembly	1
5	MH-301	Locker Assembly	1	See Sub Dwg	Assembly	1
6	MH-302	NS Locker Assembly	1	See Sub Dwg	Assembly	1
7	MH-610-01	Hydro System	0	See Sub Dwg	Assembly	1

1	REVISED OVERALL VEHICLE	6/03/2019	TL & PB	PB
REV.	DESCRIPTION	DATE	DRAWN	APPROVED
REVISIONS				

GENERAL NOTES:
UNLESS OTHERWISE SPECIFIED: DRAWING
STANDARD: A.S.1100 ALL DIMENSIONS IN mm.
THIS DRAWING AND THE INFORMATION IT
CONTAINS MUST NOT BE DUPLICATED WITHOUT
PERMISSION OF BELL ENVIRONMENTAL. ALL
COPIES MUST BE RETURNED



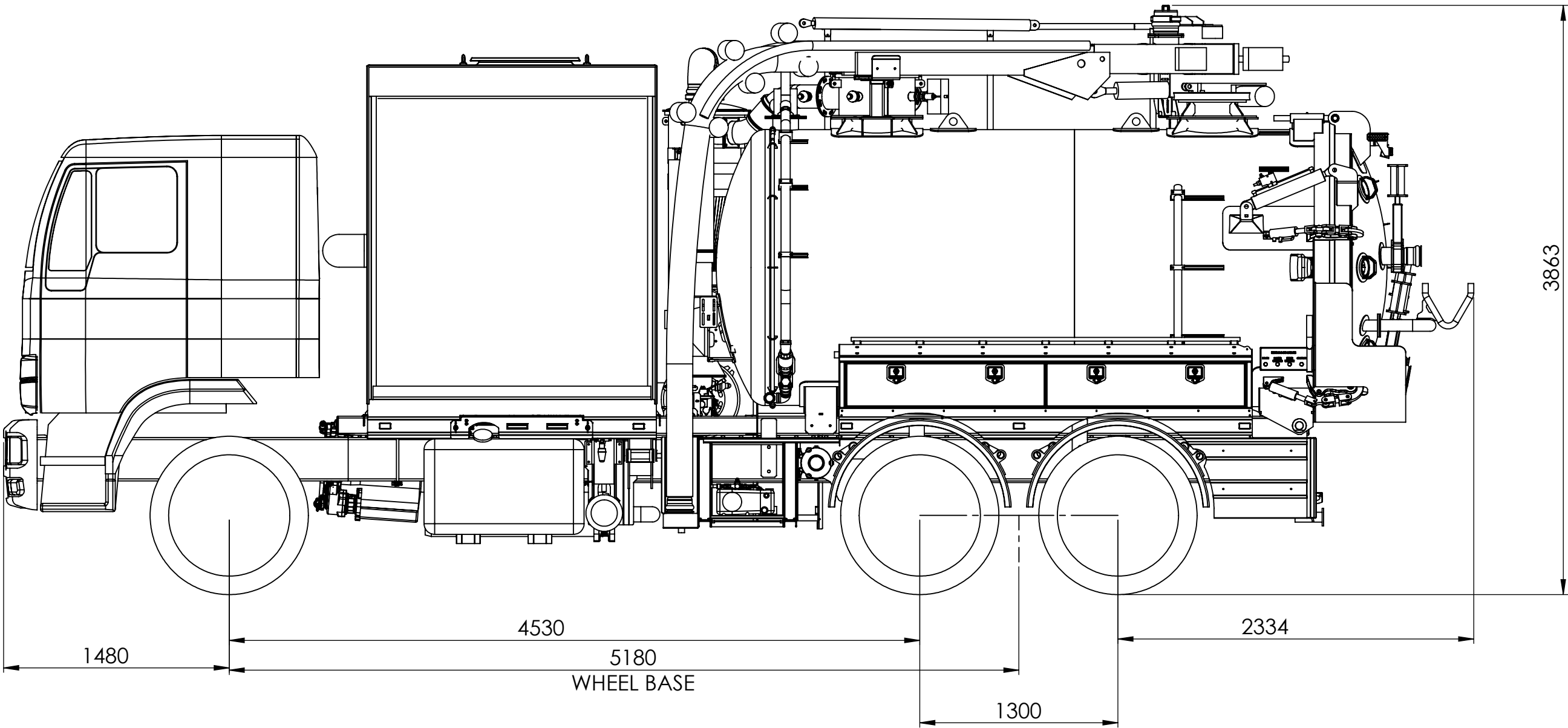
68 Berkshire Rd.
North Sunshine
Victoria 3020
Ph. (03) 8582 1861

ABN. 26 306 957 261

CLIENT:	Bell	A3
JOB TITLE:		
TITLE:	Medium Hydro Hydraulic Drive	
DWG NO.:	MH-001-01	REV 1
WEIGHT: 29870.9 kg	SHEET 1 OF 5	

MATERIAL:	See Sub Dwg
QUANTITY:	
FINISH:	See Fab. Drawings

NAME	DATE
DRAWN PB	7/03/2019
CHK'D	
APP'V'D	
SCALE:	1:40



	FRONT AXLE	REAR AXLE	GROSS MASS
CHASSIS MASS	4300	3340	7640
EQUIPPED VEHICLE MASS	5821	8404	14225
WATER (FULL)	5778	12447	18225
PAYLOAD (FULL)	5380	15345	20725
MAXIMUM ALLOWABLE MASS	6500	16500	23000

GENERAL VEHICLE SPECIFICATION	
PAYLOAD VOLUME	6500L
WATER VOLUME	4000L
OVERALL LENGTH	9.6M
VACUUM PUMP	JUROP HELIX750 - HYDRAULIC DRIVE
WATER PUMP	A&R RTX30.300 - HYDRAULIC DRIVE
HOSE REEL	3/8" HOSE
BOOM	6" SUCTION BOOM

GENERAL NOTES:
UNLESS OTHERWISE SPECIFIED: DRAWING
STANDARD: A.S.1100 ALL DIMENSIONS IN mm.
THIS DRAWING AND THE INFORMATION IT
CONTAINS MUST NOT BE DUPLICATED WITHOUT
PERMISSION OF BELL ENVIRONMENTAL. ALL
COPIES MUST BE RETURNED



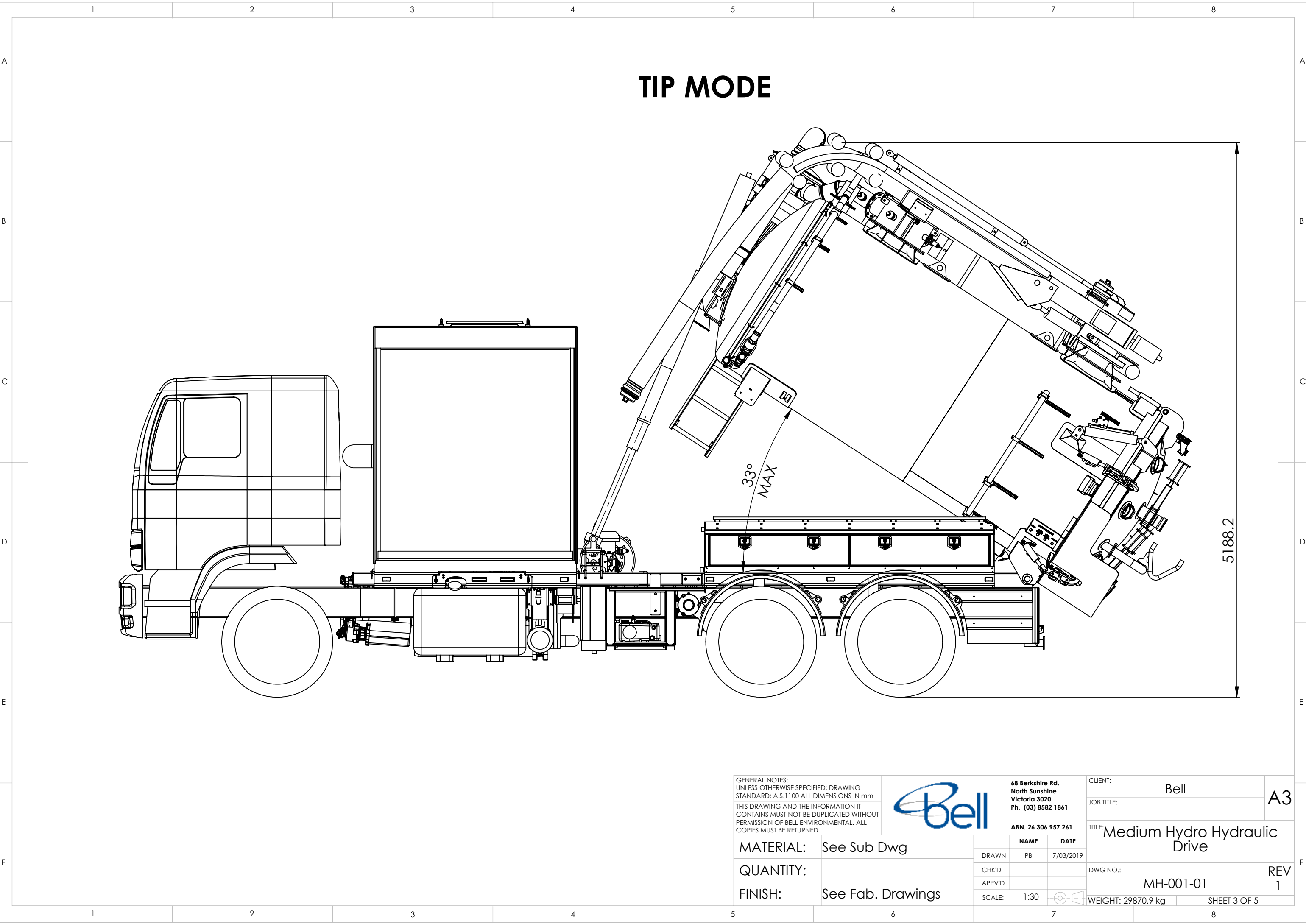
68 Berkshire Rd.
North Sunshine
Victoria 3020
Ph. (03) 8582 1861

ABN. 26 306 957 261



MATERIAL:	See Sub Dwg
QUANTITY:	
FINISH:	See Fab. Drawings

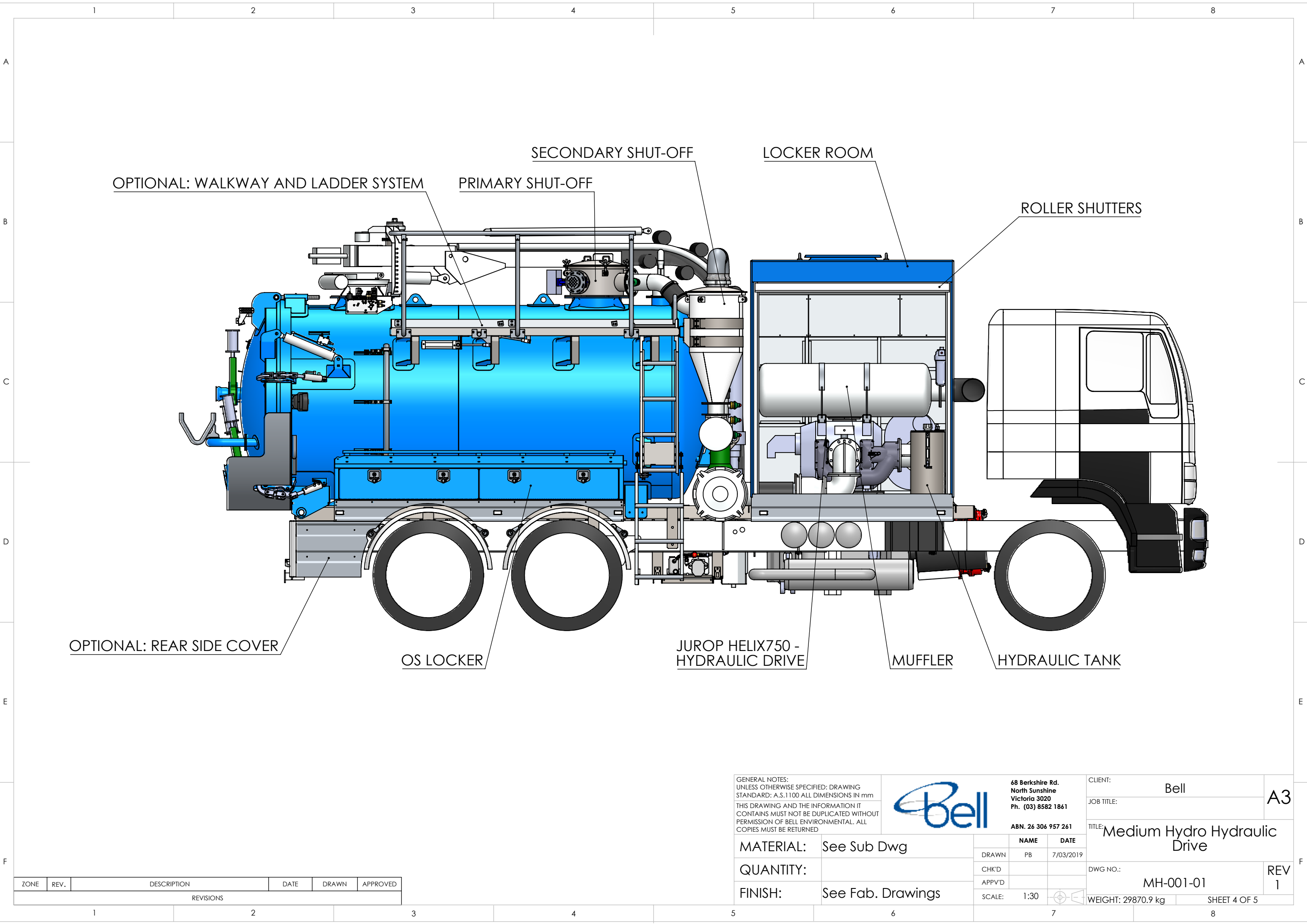
NAME	DATE
DRAWN PB	7/03/2019
CHK'D	
APPV'D	
SCALE: 1:30	

CLIENT:	Bell	A3
JOB TITLE:		
TITLE:	Medium Hydro Hydraulic Drive	
DWG NO.:	MH-001-01	REV 1
WEIGHT: 29870.9 kg	SHEET 2 OF 5	



TIP MODE

<div>GENERAL NOTES: UNLESS OTHERWISE SPECIFIED: DRAWING STANDARD: A.S.1100 ALL DIMENSIONS IN mm</div> <div>THIS DRAWING AND THE INFORMATION IT CONTAINS MUST NOT BE DUPLICATED WITHOUT PERMISSION OF BELL ENVIRONMENTAL. ALL COPIES MUST BE RETURNED</div>			<div>68 Berkshire Rd. North Sunshine Victoria 3020 Ph. (03) 8582 1861</div> <div>ABN. 26 306 957 261</div>		CLIENT: Bell		A3
					JOB TITLE:		
MATERIAL: See Sub Dwg			NAME	DATE	TITLE: Medium Hydro Hydraulic Drive		REV 1
QUANTITY:		DRAWN	PB	7/03/2019			
FINISH: See Fab. Drawings		CHK'D			DWG NO.: MH-001-01		
		APPV'D			WEIGHT: 29870.9 kg		SHEET 3 OF 5
		SCALE: 1:30					



ZONE	REV.	DESCRIPTION	DATE	DRAWN	APPROVED
REVISIONS					

GENERAL NOTES:
UNLESS OTHERWISE SPECIFIED: DRAWING
STANDARD: A.S.1100 ALL DIMENSIONS IN mm.
THIS DRAWING AND THE INFORMATION IT
CONTAINS MUST NOT BE DUPLICATED WITHOUT
PERMISSION OF BELL ENVIRONMENTAL. ALL
COPIES MUST BE RETURNED



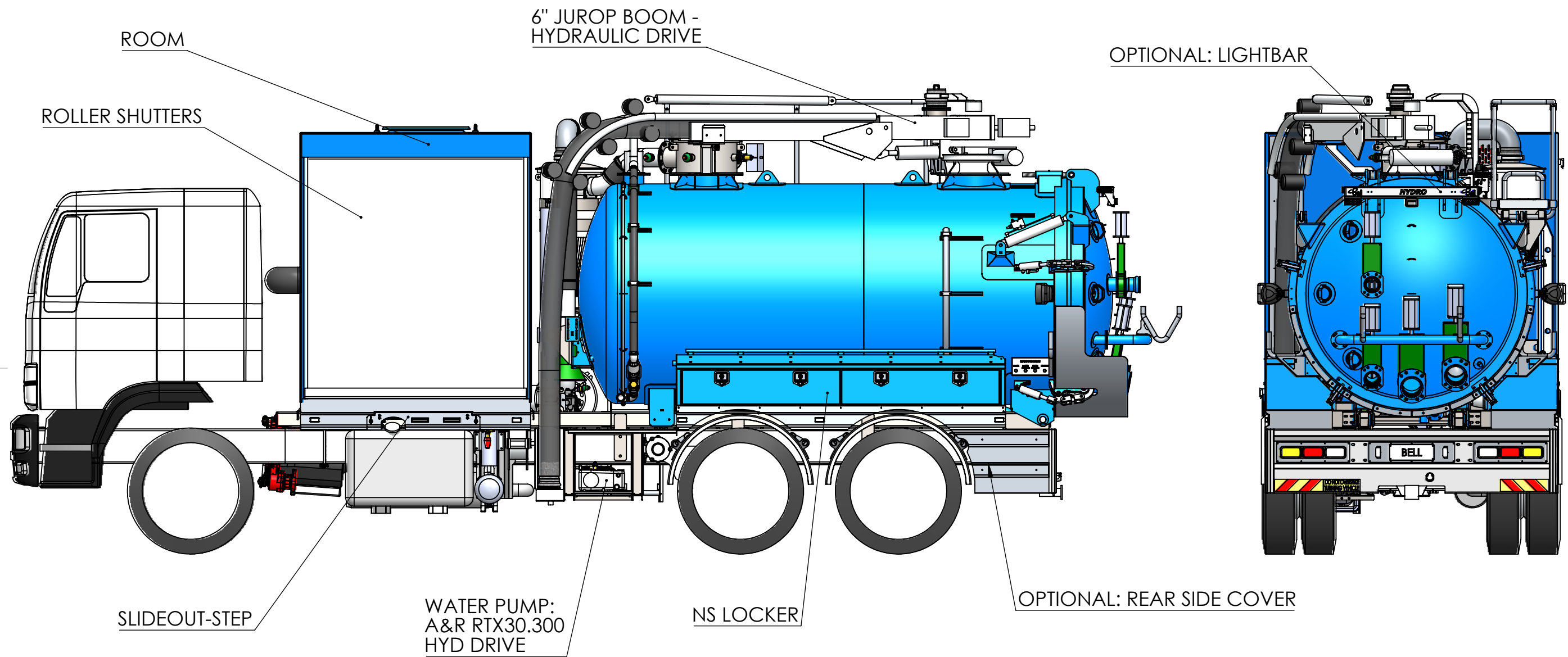
68 Berkshire Rd.
North Sunshine
Victoria 3020
Ph. (03) 8582 1861



ABN. 26 306 957 261

MATERIAL: See Sub Dwg
QUANTITY:
FINISH: See Fab. Drawings

NAME	DATE
DRAWN PB	7/03/2019
CHK'D	
APP'V'D	
SCALE: 1:30	

CLIENT:	Bell	A3
JOB TITLE:		
TITLE:	Medium Hydro Hydraulic Drive	
DWG NO.:	MH-001-01	REV 1
WEIGHT: 29870.9 kg	SHEET 4 OF 5	



<div>GENERAL NOTES: UNLESS OTHERWISE SPECIFIED: DRAWING STANDARD: A.S.1100 ALL DIMENSIONS in mm</div> <div>THIS DRAWING AND THE INFORMATION IT CONTAINS MUST NOT BE DUPLICATED WITHOUT PERMISSION OF BELL ENVIRONMENTAL. ALL COPIES MUST BE RETURNED</div>		<div></div> <div>68 Berkshire Rd. North Sunshine Victoria 3020 Ph. (03) 8582 1861</div> <div>ABN. 26 306 957 261</div>		CLIENT: Bell		A3
				JOB TITLE:		
				TITLE: Medium Hydro Hydraulic Drive		
MATERIAL:		See Sub Dwg		NAME	DATE	
			DRAWN	PB	7/03/2019	
QUANTITY:			CHK'D			
			APP'VD			
FINISH:		See Fab. Drawings	SCALE:	1:35		
					DWG NO.: MH-001-01	REV 1
					WEIGHT: 29870.9 kg	SHEET 5 OF 5